

# Turn This... Into This!!!



Review and Photos by Doug Cole

The Ford Fusion is a smart looking, great value family sedan. Confirming this is the fact that there are a zillion of those cars on the road today. Many people that drive these cars would like to own a model of their vehicle but the bad news is there are none presently available. Waiting for a plastic model is futile since that last time a current model year family four door sedan was issued; I think Nixon was In the Whitehouse! The good news is that recent rule changes for NASCAR vehicles is forcing the teams to provide bodies that more closely resemble the real cars they represent. The model companies are still making NASCAR kits and that's where we come in!

**It's easier than you think to make a model of your car!** There are a few different ways to approach it, but we can show you how to take a current NASCAR model kit and turn it into a reasonable representation of your vehicle with practically no modeling experience and minimal tools. Of course, there are different degrees of conversion and in this review we will stick to what are known as "slammer" models. Slammers are models with no interiors or opening hoods or engines.

**Different Strokes For Different Folks:** This review converts the 2015 release of the Joey Logano #22 Shell Pennzoil Ford Fusion 1:24 Scale Revell Model Kit #85-1473 into a four door late model sedan. Of course, you will need to buy the kit for its body and stickers. For the simplest version you would also need some spray paint, putty filler, fine sand paper, and some flat plastic sheet (approximately .020" thick) clear or opaque from packaging material, white glue or tape, and a hobby knife. It is also desirable to have a digital camera, printer and photo software to make printouts and decals to add realism and personalization.



Adding even more realism and customization for your model, the silver version above, requires a moderate knowledge of model building techniques and some plastic stock like Evergreen Products (sold at hobby stores or online). Additional features can be added with a small bottle of flat black paint and a small brush. You could even take the model further buy using clear windows and a donor kit to provide an interior – but that goes beyond the scope of this article. For any version, you can make a Fusion that looks like yours if you can, scratch a line with a hobby knife, print out photos to size, and use a can of spray paint to match your vehicle.

**Caveats:** Right up front you must understand that all models contain trade-offs to enable construction and finishing that differs from the real subject. You'll find this tutorial to be no exception in that the replica produced is simplified for the person with little to moderate modeling skills so they can enjoy a facsimile of a late model factory stock Ford Fusion. While not a traditional model car in the modern sense (there's no opening doors, trunk or interior) it is still a reasonably good replica of the vehicle. Some things are not quite correct, but in the end they are forgivable oversights. Additionally, you could take this model as far as you want to correct these trade-offs but that will require advanced modeling methods and parts from a donor kit.

## Version 1

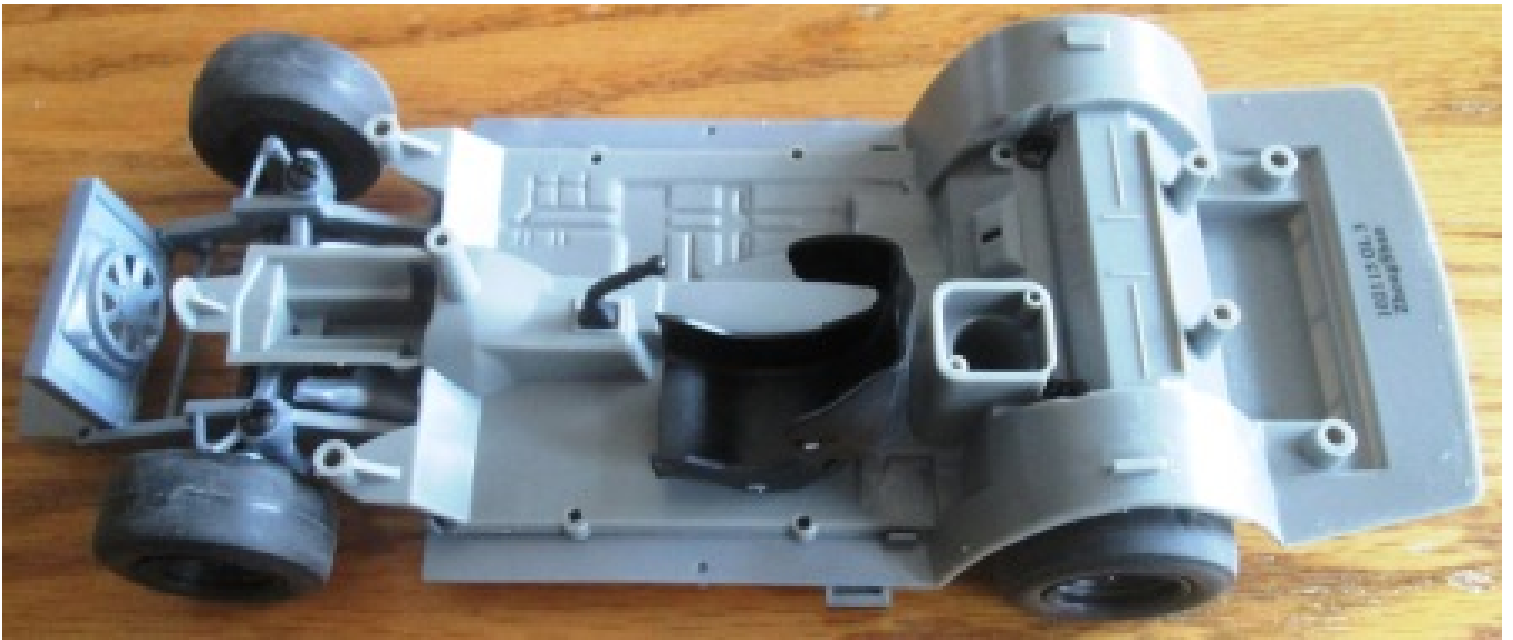


This is the most basic version of the conversion.



The first thing to do is to construct the frame of the base kit from the Joey Logano #22 Shell Pennzoil Ford Fusion 1:24 Scale Revell Model Kit #85-1473 or the companion Brad Keselowski #2 Blue Deuce Ford Fusion 1:24 Scale Revell Model Kit #85-1472. The frames and the bodies are identical and either can be used here.





You only need to assemble steps 2, 3 & 4 to get a rolling chassis together. The seat and shifter are installed here but they won't be needed either. A few simple screws and you'll have the base frame together in about 3 minutes.

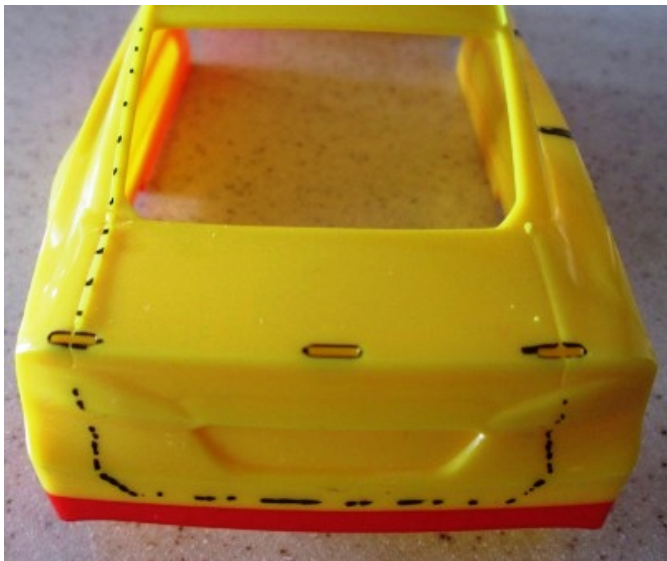


Take a photo of your car's wheels from straight on at its center. Also take a photo of your rear license plate for later. Print them out using your PC and a photo program. They can just be black and white but with color they enable color from the center caps and license plates to show up. Carefully, cut out the wheel photos with a pair of scissors or a circle cutter and glue them onto the wheels of the NASCAR chassis.

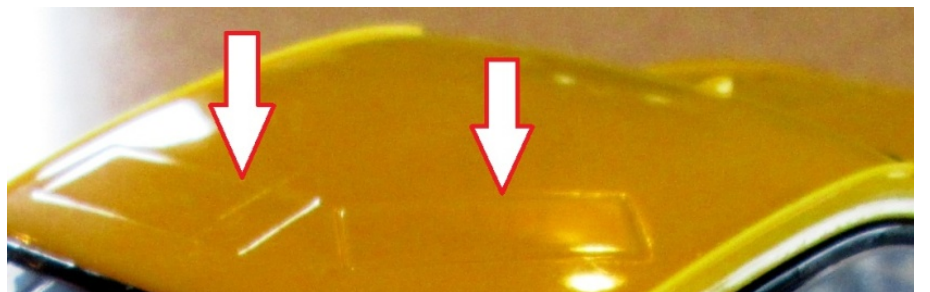
Get out the pre-painted Fusion body from the kit and sand it overall with some fine sandpaper. This will aid in adhesion for the body putty and paint later on.



I started the body modifications by using photos of a real Fusion (my friend's car) but you could use online photos as well, to sketch in the door, hood and trunk panels that are missing from the NASCAR body.



The three slots at the back edge of the trunk are highlighted as they will need to be filled with body putty. Also the drip edge on the left side that extends from the top of the roof to the edge of the trunk appears as a dotted line and will need to be removed. On the right, the safety web will be removed with a hobby knife and the exhaust slot at the bottom will be filled in.

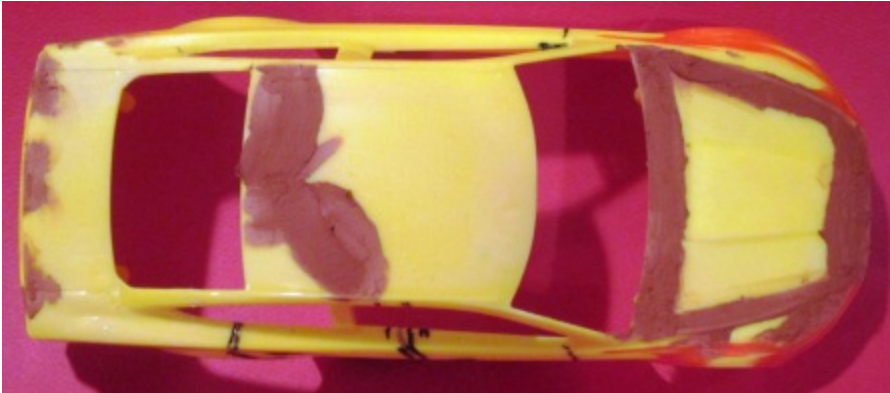


The front spoiler ridge that runs along the bottom of the front fascia will have to be removed and rounded off. That's the area indicated by the white line to be sanded flat to match the body accent there. Also, the hood line panel on the NASCAR body (outlined with a black marker) will have to be filled in and sanded smooth. The roof access panels on the right will also be filled and sanded smooth





On the right rear driver's side quarter panel is the fuel filler inlet that will be filled with putty also. The back end of the model will be one of those trade-offs I mentioned earlier. On the NASCAR model it is wider and more squared off than the factory car. Correcting that would require some major surgery to narrow the trunk area. That said, we will simply round off the corners of the rear quarter panels in the designated area to give it a softer look.



For areas that need to be removed use the hobby knife to scrape away the plastic and the sandpaper to smooth it out. For small features sandpaper alone is adequate. To fill the features that need that just apply a thin coat of any hobby store body filler in thin layers and use the sandpaper to smooth out the surface.



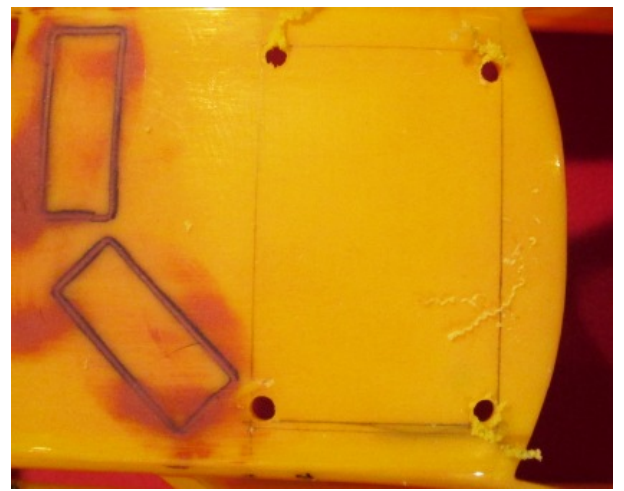
The rear quarter was rounded off and the roof access panels and fuel filler were filled in and sanded smooth.



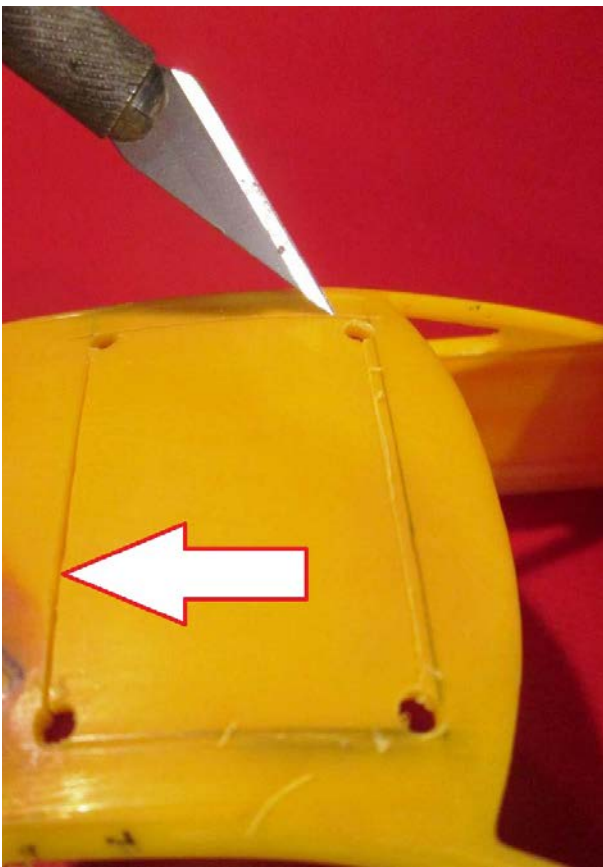


Finally, the hood panels are filled and sanded too.

**OPTIONAL:** The subject car that I was duplicating had a sunroof so I added one to my model too. Start by



drawing the opening on the roof. **NOTE:** If you have a sunroof and don't have a drill there a couple options to add one here. You could just print out a decal and apply it after final paint. You could also use the backside of your hobby knife blade to scribe (scratch) a panel line into the roof and paint the area black later.



To add my sunroof I started by drilling a hole just inside each corner. I then used a straight edge and the scribing technique with the backside of the hobby knife to score the panel from hole-to-hole. The line on the left is cut almost all the way through (arrow) while the others are just being started. It takes about 15-20 passes to get through the plastic but it leaves a nice clean cut. Just make sure it's not on you. BE CAREFUL!



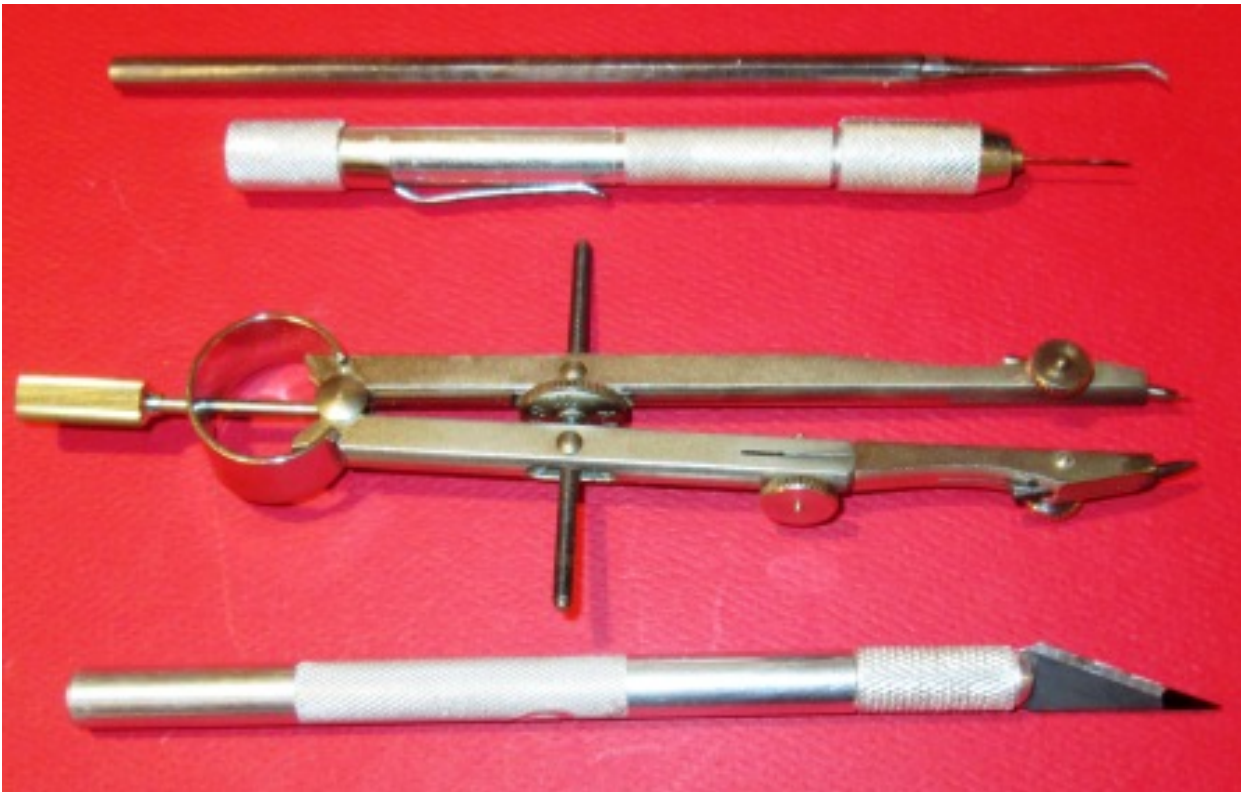
Trim shape and sand the opening until you get the results you want.





Now that most of the body work has been done it's time to start scribing those panel lines we drew on the model at the beginning. I'll admit scribing panel lines is not favorite part of modeling but you can't help but get better with practice. If you've never done it before it might be a good idea to get some practice using an old model or even some plastic stock before you start in on this Fusion. You can make your model without them but it makes it a much more realistic replica if it has panel lines.

**SCRIBING:** You can do everything you need to do with the backside of a hobby blade and a steady hand but for the rest of us there are some small tools available at hobby shops and techniques available to help.

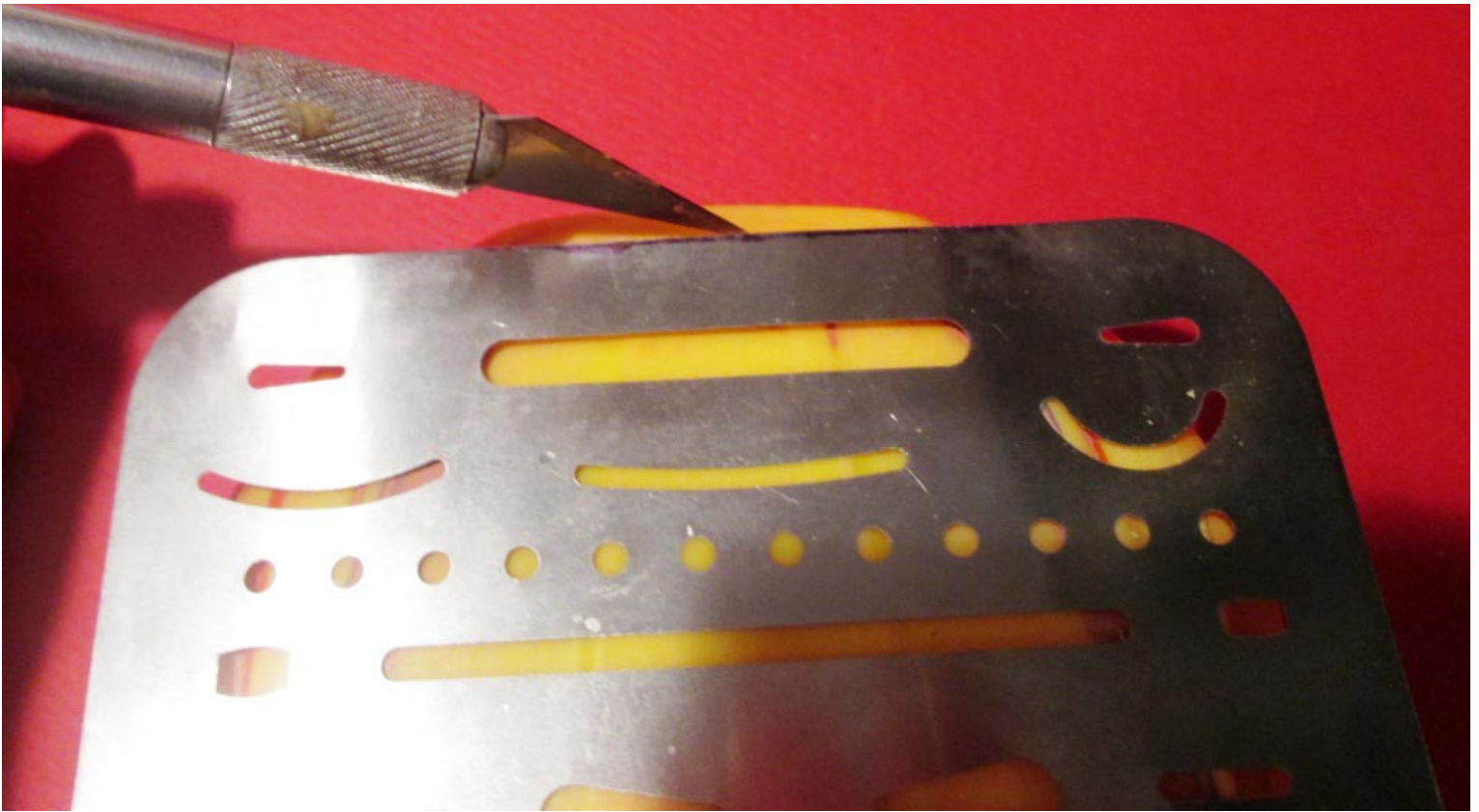


These are the main tools used to scribe panel lines. From top to bottom: Scribe Tool, Pin Vise, Divider and Hobby Knife. **NOTE:** I use a black Sharpie to mark the tip of the hobby knife blade to help see it better.

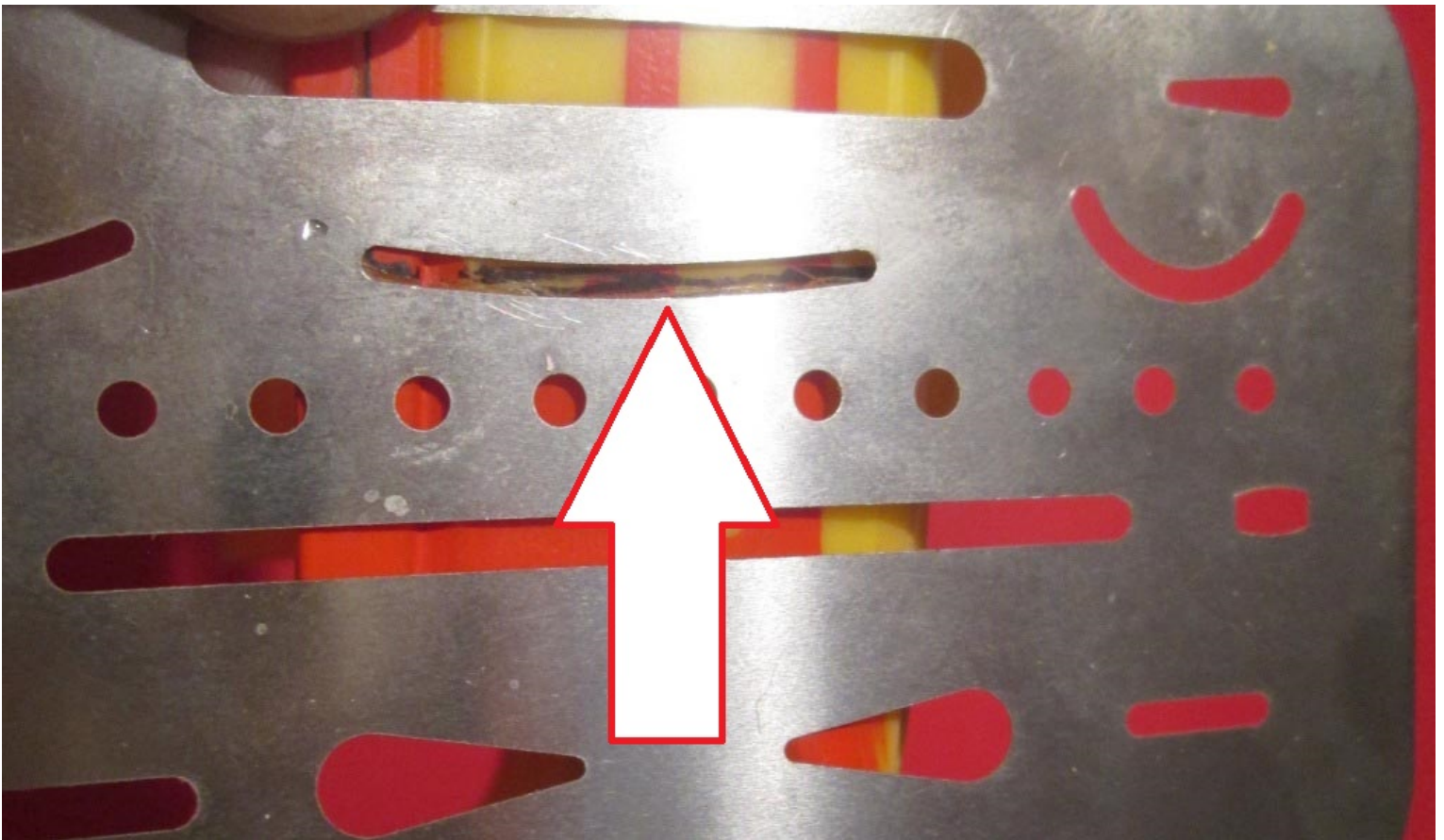




These are some helpful aids to draw lines and contours. They are, from top to bottom: thin metal drafting guide, 15 CM steel rule and Dymo® style labeling tape. The key to scribing is patience and starting out with a light touch and adequate lighting. The hobby knife works fine but you have to be more careful. You simply start out with a very light touch slowly drawing your tool along the scribing aid you're using – barely touching the surface until you get a credible line for deeper cuts or a path for the other tool to follow. I typically start with the pin vise that has been fitted with the tip of a straight pin until it leaves a deep enough etch. I follow that with the backside of the hobby knife blade and finally the scribing tool if it needs some extra width. Remember – practice makes perfect.



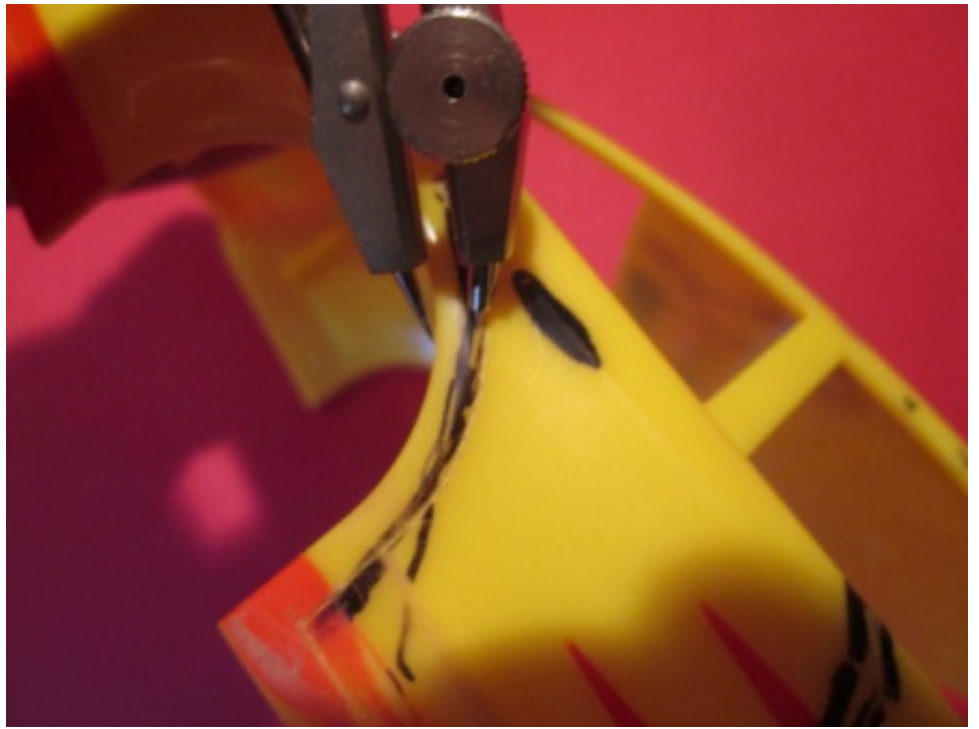
I start by scribing the straight cuts first.



Slight curves (arrow) like the forward door panel are best started with the aid of an object that has a hard edge or pattern like this Helix® drawing aid. But any object that fits the bill, like a can lid, will do.



Some panel lines will follow a contour and it's best to use something that will start the scribe that can control the width like these dividers.



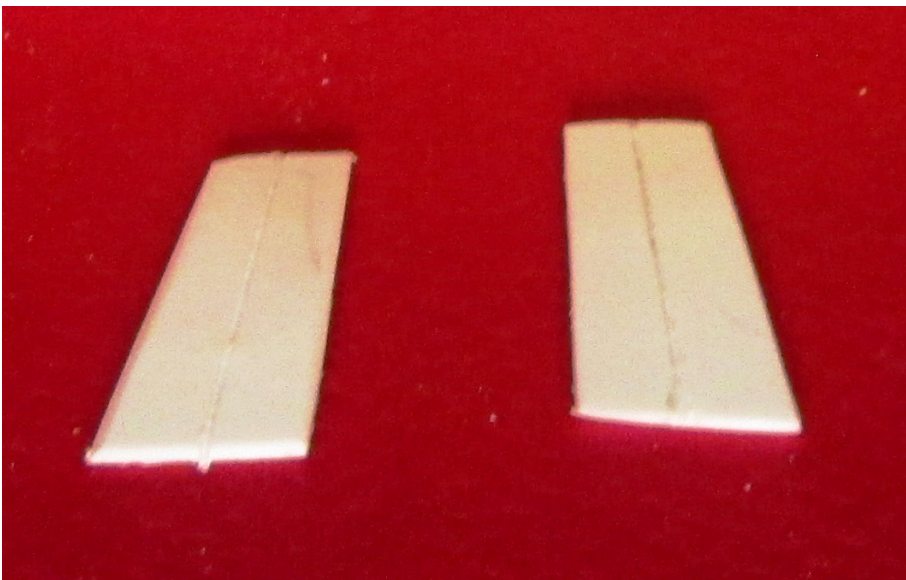
You can touch up any extraneous cuts with body putty but this is what you will end up with.



Now it's time to cut out the door posts and replace them with some plastic stock pieces. We left those in while working on the body and cutting the sunroof to keep from collapsing the roof. Use your hobby knife to score (scribe) the NASCAR door posts at the top and bottom until you've cut through them, then sand the site smooth.



You can find plastic sheet stock at hobby stores or as part of the packaging for many products. It doesn't matter what color it is. The important thing is that it can be glued into place after you've cut it to size. Practice with scrap of the material if you're not sure to determine if your adhesive will work on it. Using your photo of a real Fusion, draw an angle on the stock like that on your car. Use your hobby knife or a pair of scissors to cut the pieces (one for each side) a little larger than needed.



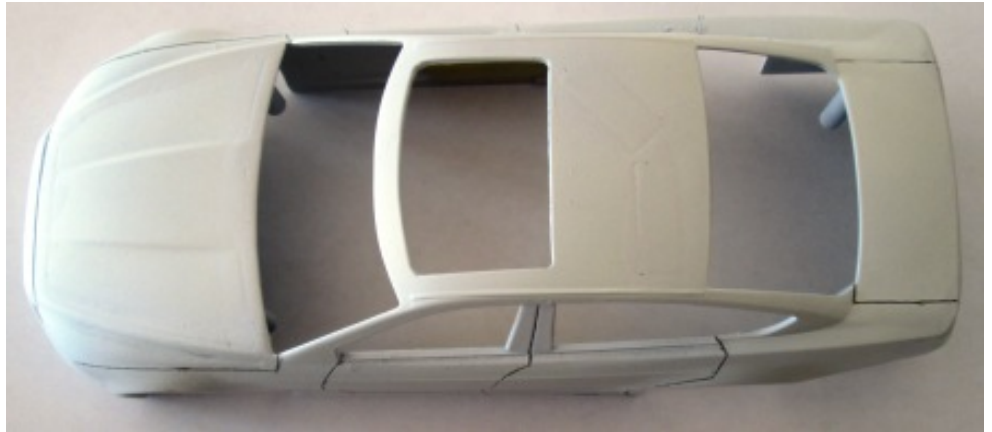
Sand the edges flat and smooth then bisect the piece from top to bottom with a scribed line using a straight edge. Bend the piece to give it a little arch from top to bottom on the inside of the pieces. Test the fit to make sure you don't remove too much material in the window frame where the scribed line matches up with the one between the two doors.





Glue the posts in place at the door panel line.

Give the body an overall light sanding. Mount it on top of a paint can or clothes hanger frame and spray it with some primer. The panel's lines were accentuated here with a pencil to see how they look. You can make any repairs or changes at this time with the body. After that has dried sand the repairs spots down and give the whole thing another light sanding. Rinse the body off in a lukewarm bath of dish detergent. Rinse it off clean and let it air dry.



Paint your model in your choice of color. You can get matching car paint at many big box store's like Wal-Mart or Meijer and at most automotive parts stores. Let it dry thoroughly. That can take from an hour to a week depending on the paint and drying conditions.

Using a piece of plain paper, or black construction paper, trace the window and sunroof openings onto the paper.

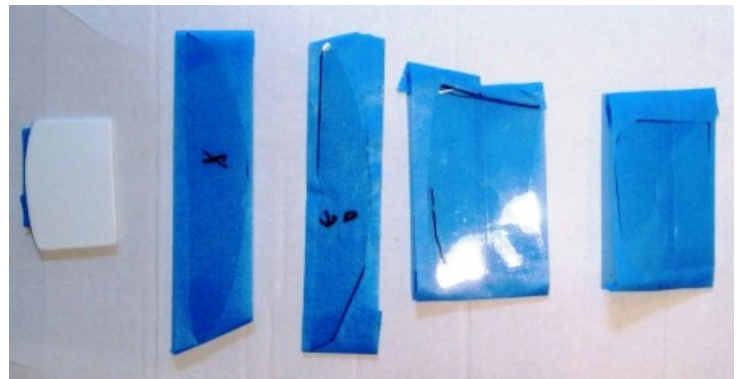


Cut out the shapes to be used to transfer the outlines to either construction paper or some plastic sheet stock. I used the window tracings here to cut the shapes out of black construction paper.



If you have some clear plastic sheet stock, you can use that to provide a very shiny window surface to the model for more realism. It isn't hard to find. You can also use the black plastic that is often used for the bottom or pre-packaged vegetable trays or any flat piece of clear material from a blister pack or container. Trace the shapes and cut them out with scissors.

If you use the clear plastic material, use some low tack tape to mask off the inside of the material and mount it on a cardboard surface then spray paint the outside black or silver. You can also see the blank I cut there on the left for my sunroof from some thicker sheet stock. That gets painted black separately.







I cut some scrap plastic and glued it to the opening on the underside of the roof to house the sunroof blank.

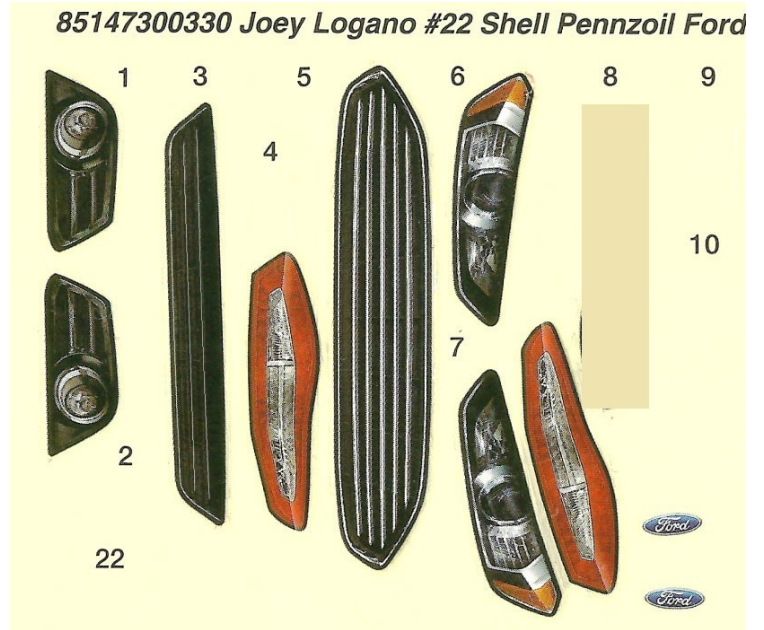


Here are the window blanks ready to install. You may need to trim them in spots to make sure they fit properly.

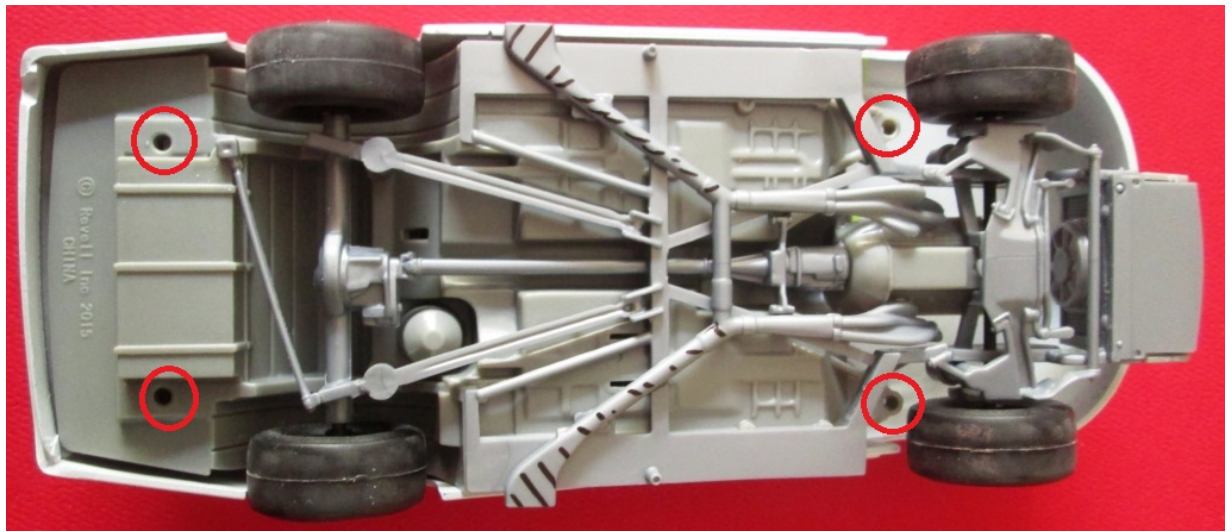


Turn the body upside down and tape the (paper) or use some white glue (plastic) shapes into place.

Get the stickers out of the kit box and select the one's shown here. These are the factory stock features that you'll need for your model. It's pretty straightforward but you can use the instructions to identify the placement locations.



Use the kit supplied screws to fasten the frame to the body. If you had installed the exhaust system in step one of the instructions you can pull them out or just clip off the angled exit pipes (oblique markings). The side exit slots had to be filled in earlier.



Here's the finished product and except for a little scribing action – it's not all that hard to make a model of your fusion for the display cabinet. You can also place a piece of clear gloss tape over that photo of your license plate and cut it out, then use some white glue to apply it to the back of your model for that extra personal touch.



## Version 2:



Stepping up our game we add body detailing strips, rear reflectors and molding strips, black plastic windows, front fascia changes and a radio antenna. Additionally, some custom decals are made to represent the fuel filler cover and door handles. There's also a scratch built exhaust pipe for the final touch. Overall, this provides a finished product that has nearly all the external appearances of a factory stock Ford Fusion.

**Additional Tools Needed:** A flat and rat tail file, color printer, decal paper, Super Glue, chrome foil.



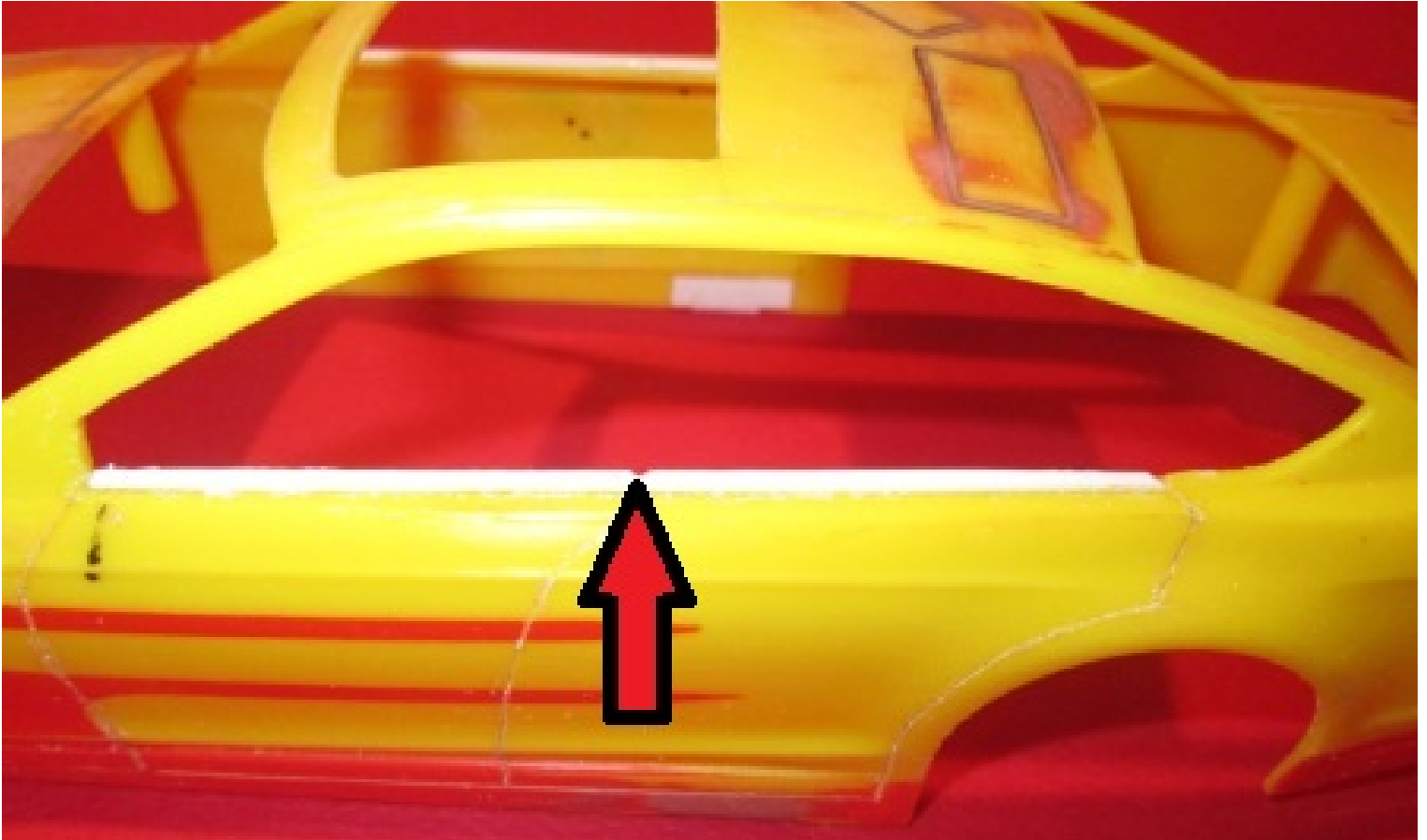
So we start with the same frame that was described above.



Follow the steps outlined above all the way to the point where the door pillars are removed on page 11.



On each side of the car at the bottom of the windows is a molded in strip. It's not symmetrical on both sides of the vehicle because the position of the door pillars was staggered on the NASCAR model. Scrape those down and sand them smooth or file them off from the front to the rear of the second door opening. Cut a piece of plastic strip (Evergreen .020 x .060) and glue it in to replace the trim that you filed off. File off the strip at the rear to taper it to the level of the molded trim running up the back quarter window.

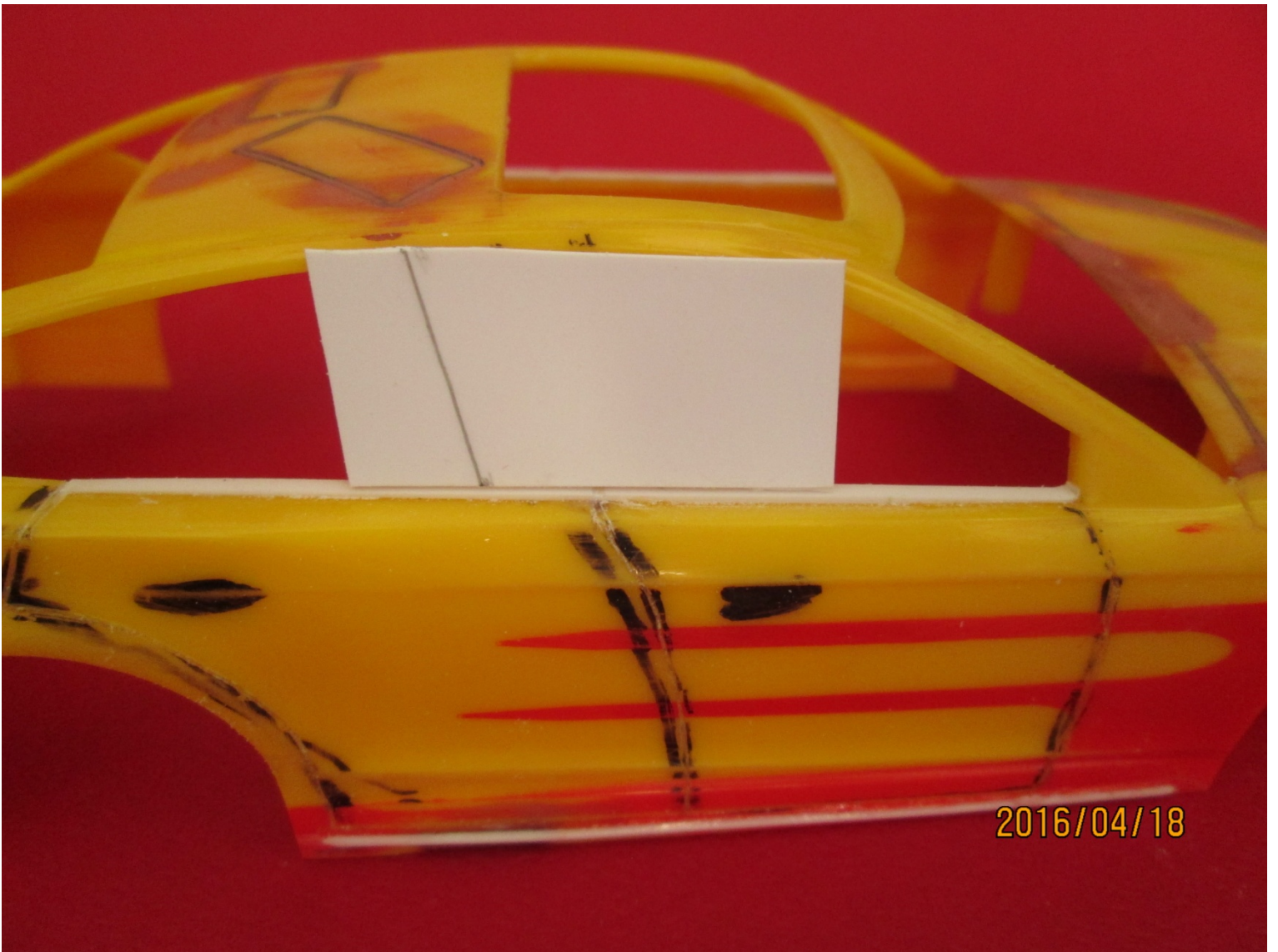


Put a notch in the trim where the doors come together at the panel line.

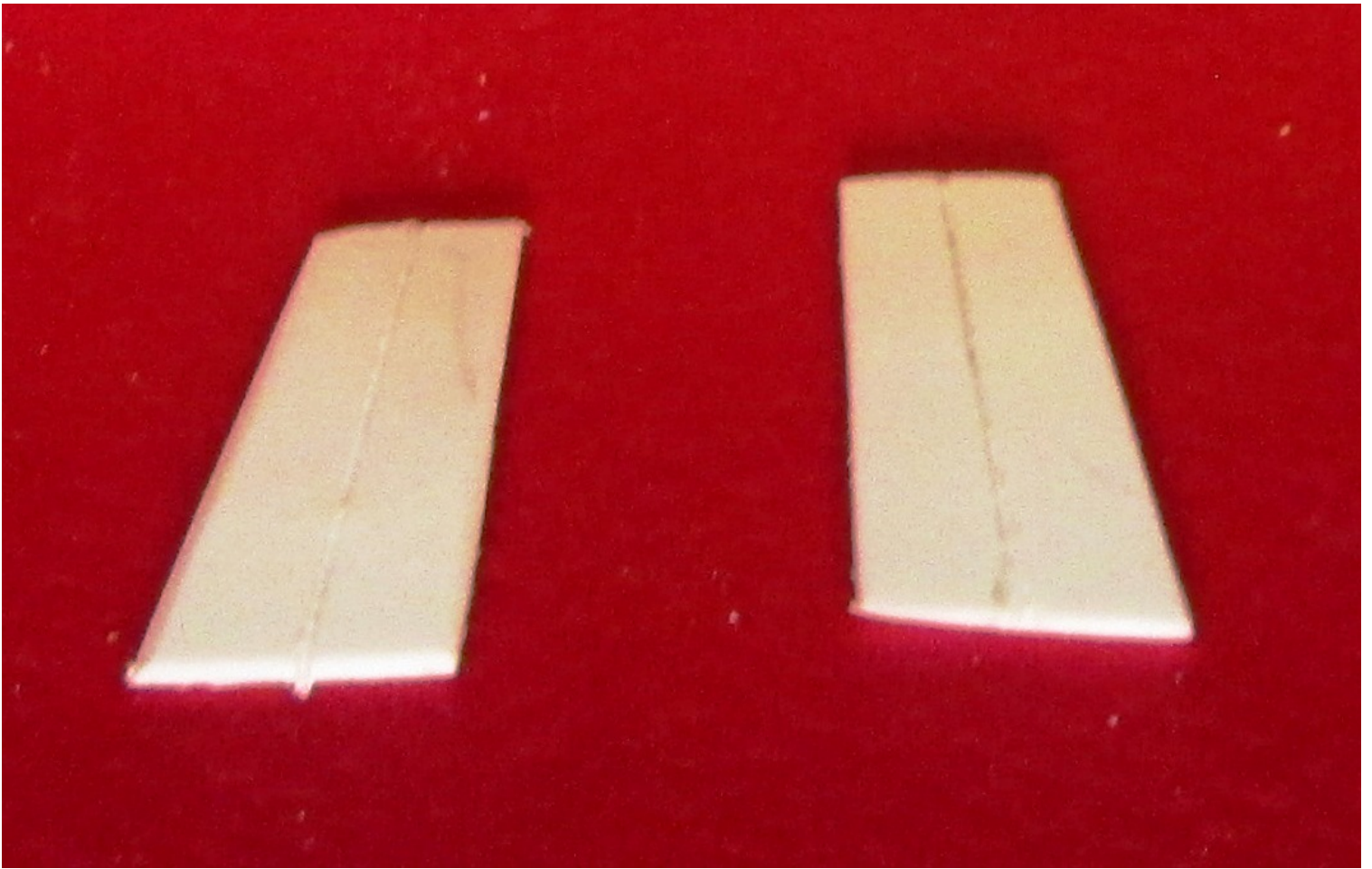




Cut and glue a piece of half round strip (Evergreen .040) across the bottom of the door opening.



Using your photo of a real Fusion draw an angle on the stock like that on your car. Use your hobby knife or a pair of scissors to cut the pieces (one for each side) a little larger than needed.



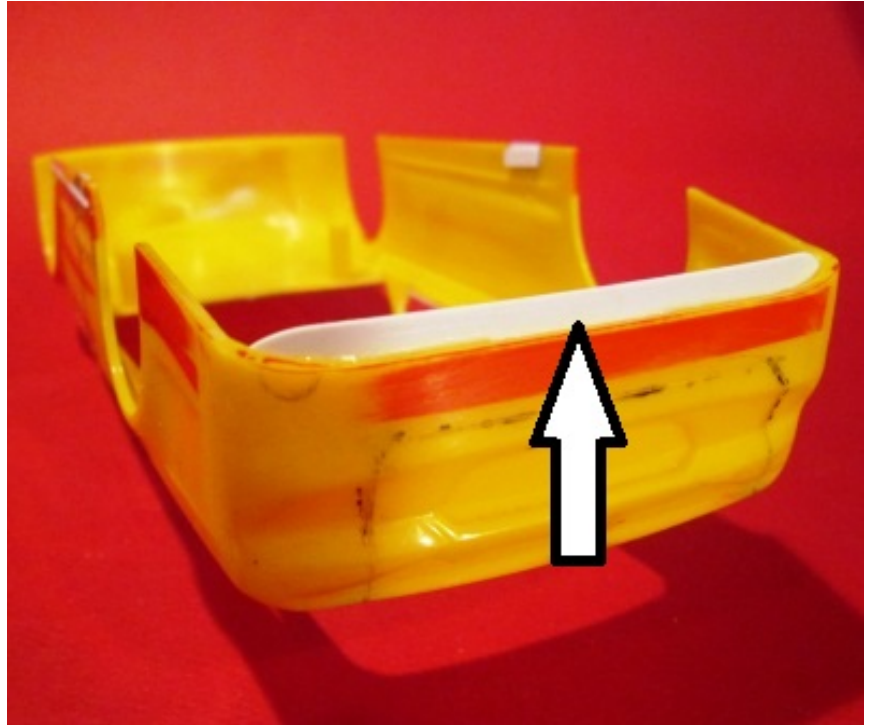
Sand the edges flat and smooth bisect the piece from top to bottom with a scribed line using a straight edge. Bend the piece to give it a little arch from top to bottom on the inside of the pieces. Test the fit to make sure you don't remove too much material in the window frame where the scribed line matches up with the one between the two doors.



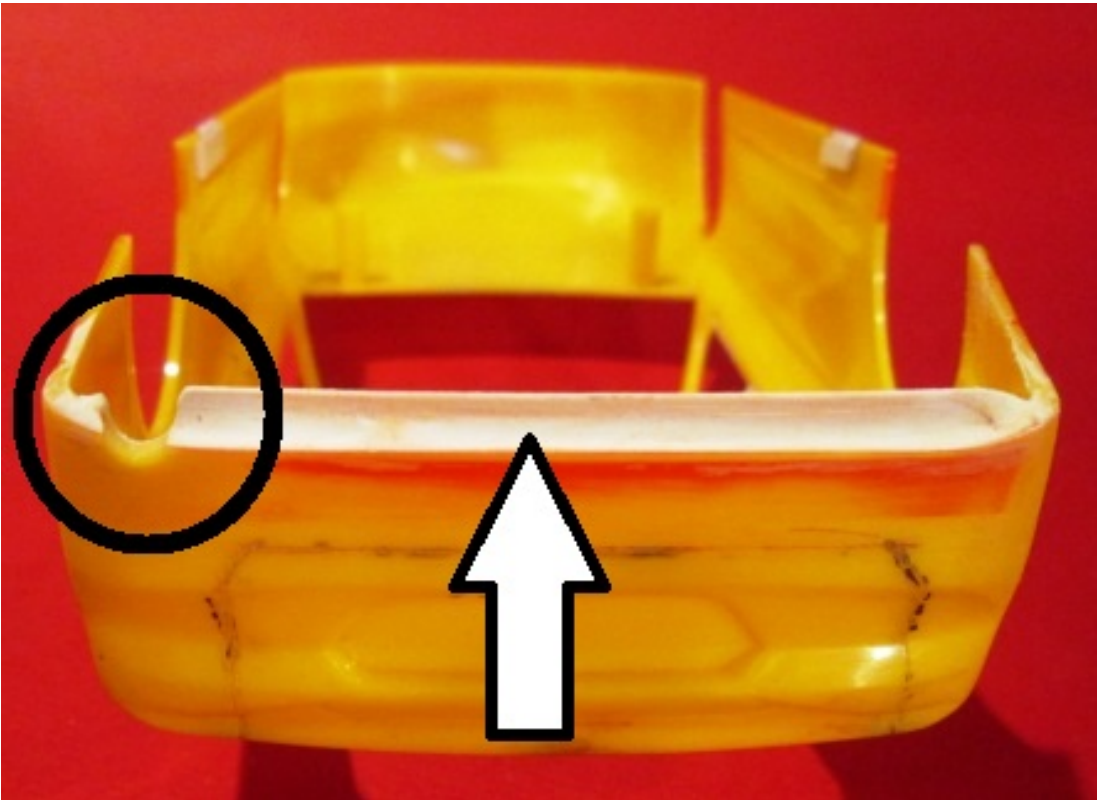
Glue the posts in place at the door panel line.



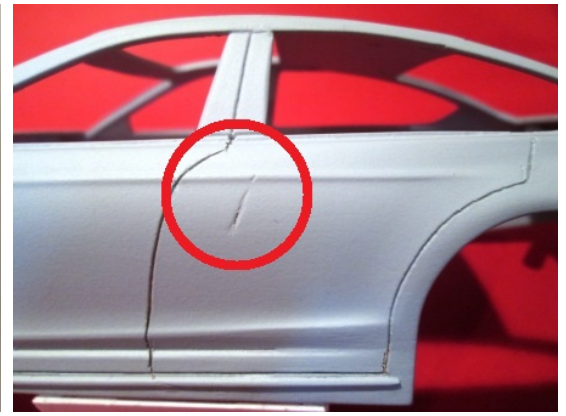
**NOTE:** On front and rear fascia, changes are typically made from one model year to the next and between trim levels for the vehicle. This vehicle is modeled after a real 1:1 car but yours might have different features. Duplicating them should use the same process but you should modify the features to duplicate the ones on your car if you are replicating it!



Cut a piece of sheet stock 3/8" wide to fit into the length of the rear roll pan. Glue it into place leaving about .100" to extend the length of the roll pan closer to the ground.



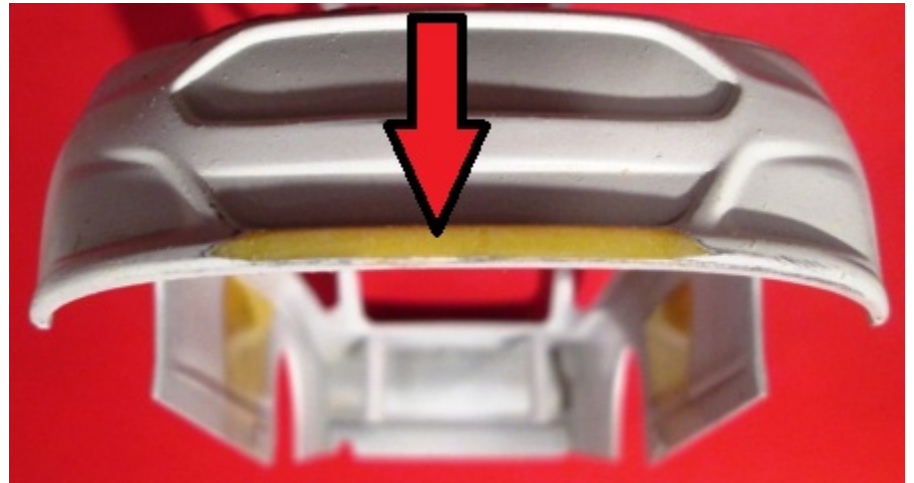
Cut a notch (black circle) into the passenger side at the rear and round it off with a small rat tail file or sand paper. This will accept the tail pipe later. Put some body putty along the area the area between the body and the additional skirting (arrow) and smooth it out to create a shallow transition to the body.



Give the body an overall light sanding. Mount it on top of a paint can or clothes hanger frame and spray it with some primer. The panel's lines were accentuated here with a pencil to see how they look. You can make any repairs or changes at this time with the body. After that has dried, sand the repairs spots down and give the whole thing another light sanding. Rinse the body off in a lukewarm bath of dish detergent. Rinse it off clean and let it air dry. On the rear passenger's door (right photo) a parking lot ding was added to really personalize the model and duplicate the real thing. If you have any damage or custom features on your car it is a nice touch to replicate those.

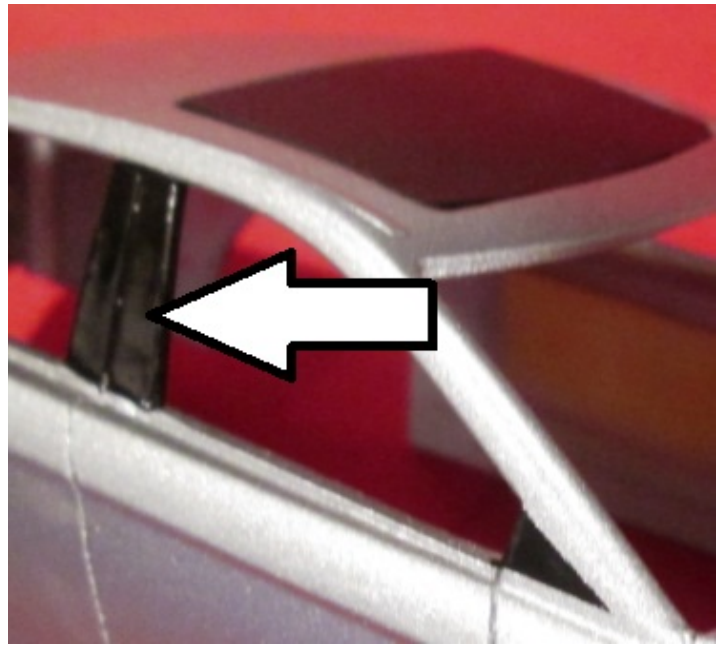
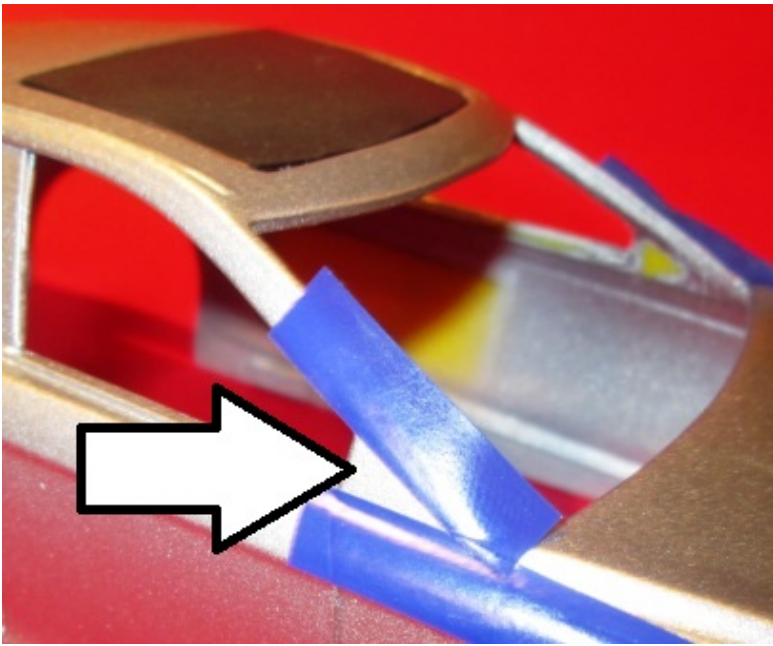
At the front end a flattened area was added to the bottom of the fascia there. Again you may not have this feature depending on your car, but modify it as needed. Later this area gets painted semi-gloss black.

**NOTE:** Those are the additional body trim features that were added to the build from Version 1.

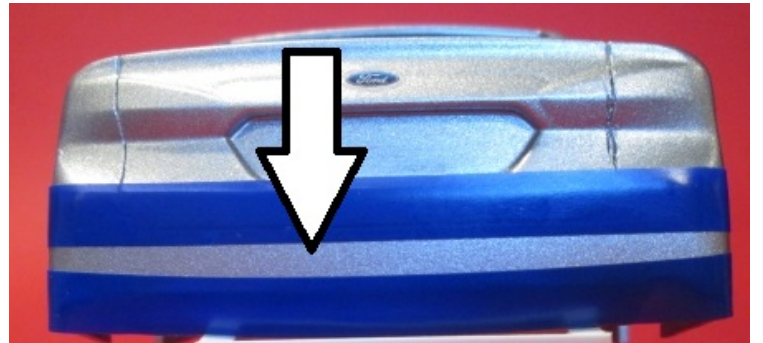
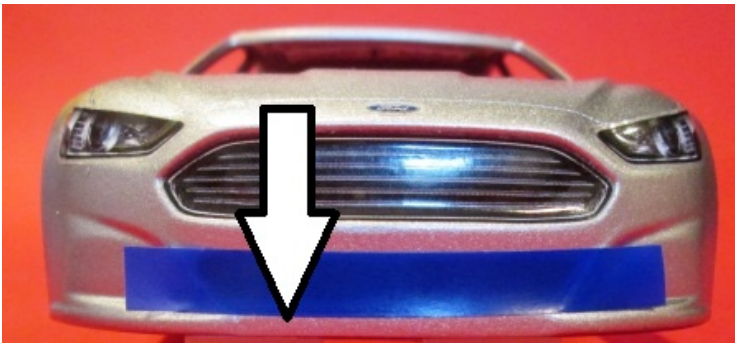


**NOTE:** You can follow the rest of this build from [here](#) in Version 1 (Paint your model in your choice of color - I used Testors Silver #1241) on [page 13](#), to adding the stickers on [page 16](#).

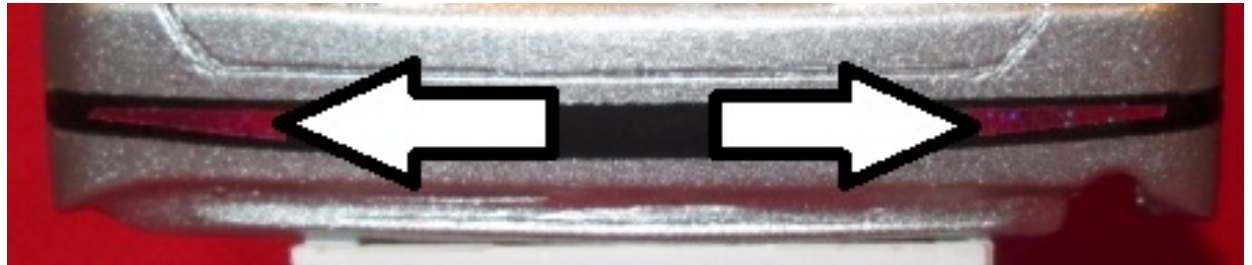




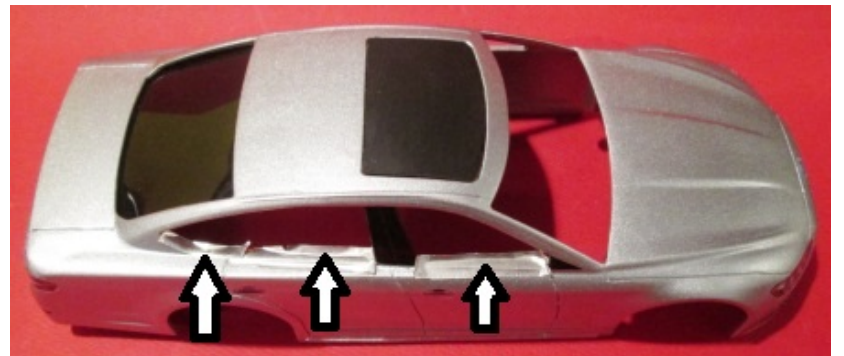
There is an area at the front of the windows that should be taped off and painted semi-gloss black. The doors post is the same color but it can be painted easily without tape.



If you have these trim features use some good masking tape and paint these areas semi-gloss black.

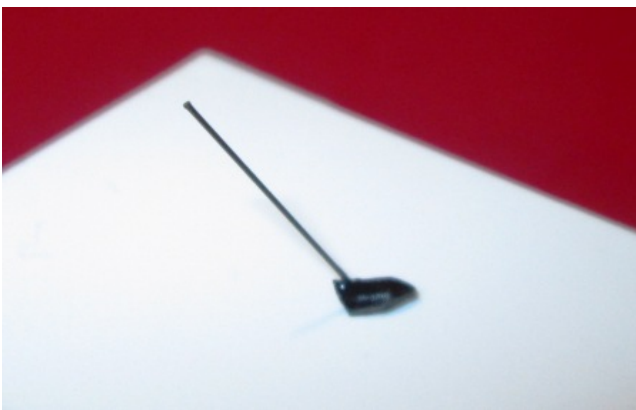
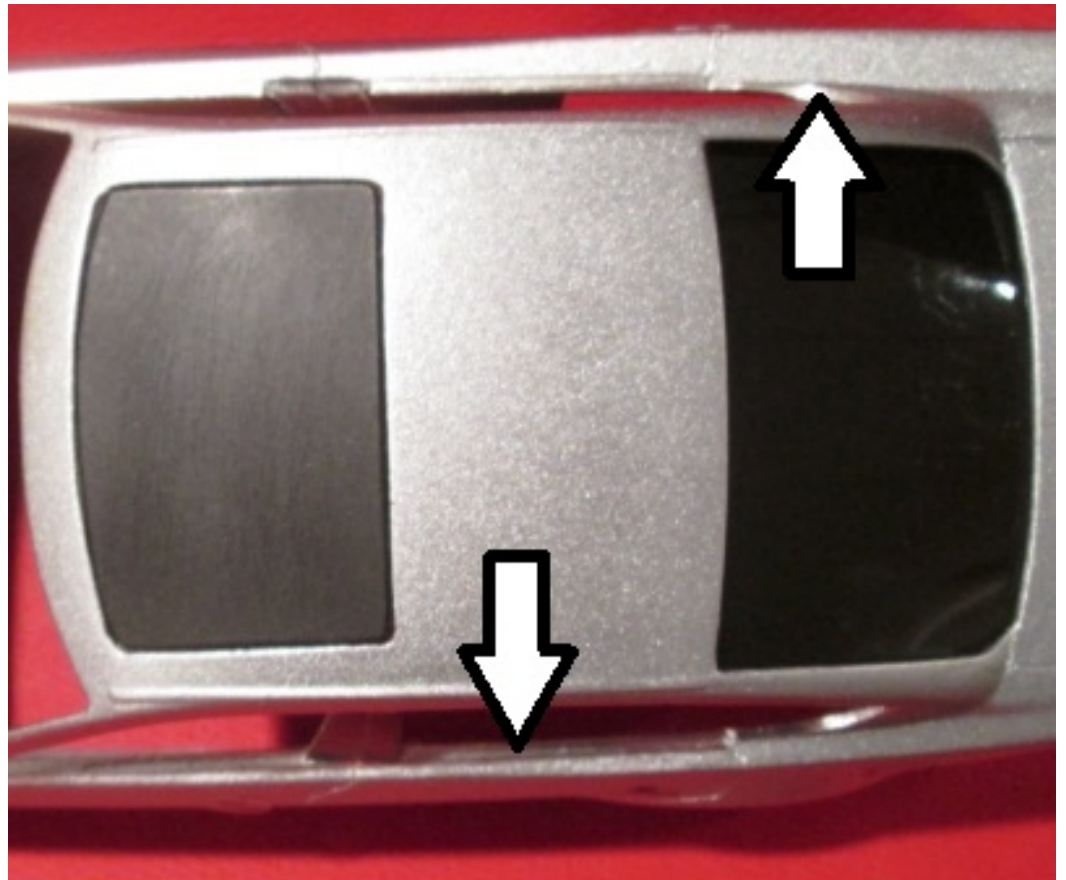


If your car has reflectors on it like this one you can use reflective stickers like the ones that you'll find at a dollar store to cut out the appropriate shapes and stick them on. Because they are reflective they also add to the realism of your model.



The trim that was added to the body below the windows is chrome plated on the real car. You can find self adhesive metal foil at most hobby stores and on line as well. Bare Metal Foil® is the leading brand. You can also use plain old aluminum foil but you'll have to glue it into place. Apply the foil in strips to the trim and press it down so that it stick or glue the plain stuff onto the trim rails. Use a new hobby knife blade to cut the excess off of the trim by running it along the joint between the body and the trim piece. Burnish (rub it) the foil to a high shine.

It doesn't show up well on a silver car but the foil really stands out on other colors. At this pint you can screw the body to the chassis just like in the first version [here](#).



pin that's been cut to length and glue it into the hole with a backward rake. One additional touch is to add some mirrors from a donor kit or your spare parts box if you have them. It's optional but it enhances the realism of the model. Just paint them to match your cars body color and glue them to the doors in the appropriate location.

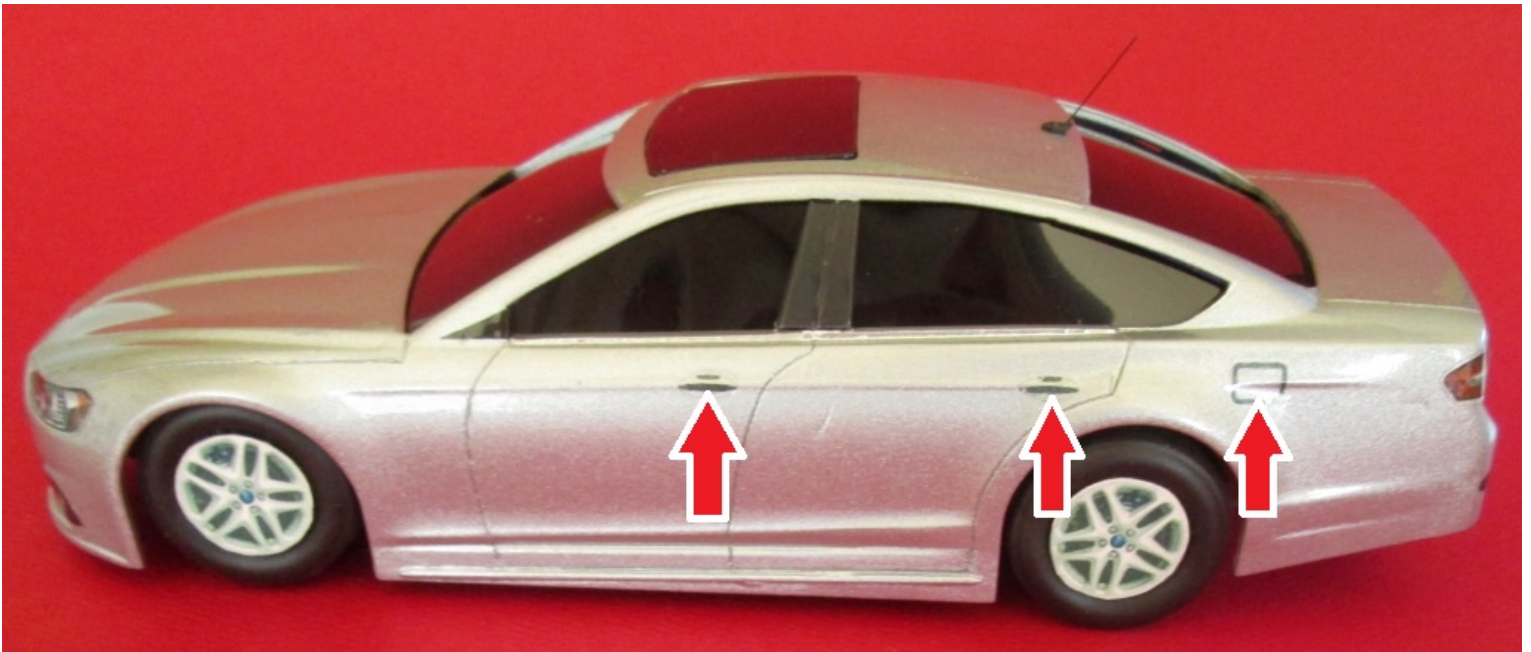
One prominent feature of these cars is the roof mounted antenna that is easily made by shaping a piece of plastic. You can use a piece of the discarded exhaust pipes to make the base and your file to shape an end into somewhat of a triangle. Using the tip of your hobby knife or a small and drill (pin vise) put a small hole near the rear of the base. Use a small piece of wire or a straight







Cut off a piece of sprue about 1/8" in diameter and an inch long. Use your hobby knife to ream out the end of the pipe. Paint the pipe silver and the end flat black. Glue the pipe to the frame making sure it sticks out the relief area in the rear fascia.



There is one final set of details that are needed to make your model look real; door handles and the gas filler door. There are a couple options there for construction. You can carefully scribe those features into the body or you can print out some decals that emulate the features. I chose to do the latter and if you have a simple photo program, printer and some decal paper appropriate for your printer you can simply find the shapes you need in the program (Windows Paint, GIMP, Photoshop will all work) and print them out to size on some plain paper. Adjust the sizes until you get what looks right. Then print them on the decal paper. Use some clear spray or decal fixative to seal them. After they've dried cut them out close to the shapes and apply them to the body.







Overall: It's not perfectly proportioned and, as I mentioned there are some tradeoffs, but if you're someone that wants a model of a factory stock Ford Fusion customized to your desires: here are two versions that can be made depending on your skill sets that will fill the bill. You could also springboard off this and use clear acetate for the windows and supply a donor interior for even more realism. I hope you'll find these suggestions helpful in building your own version.

## Premium Model Reviews



**Right On Replicas, LLC**